

Anchored PowerLoc

FIXED RESILIENT SYSTEMS

Anchored PowerLoc is a hybrid of our ever popular ScissorLoc and Anchored PowerSleeper systems. The combination of these systems delivers a dimensionally stable floor with excellent ventilation capabilities and uniform performance. The option of the PowerVent™ Airflow system adds a feature which will detect moisture and start drying the system with mechanical airflow. The floor's uniform performance makes it a good selection for new and retrofit sports floor applications. The system is MFMA PUR compliant.



INFINITY
Wood Floors

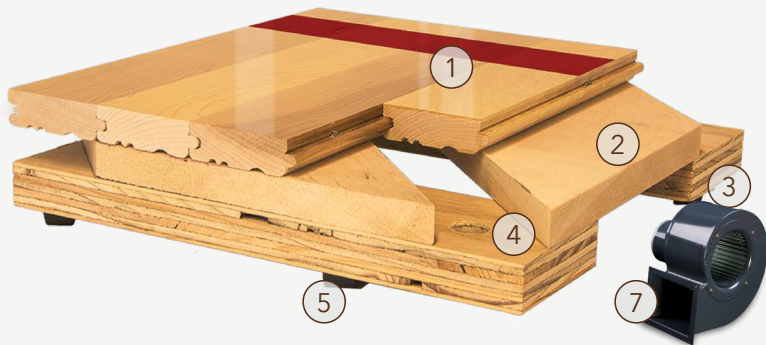


AACER
SPORTS FLOORING



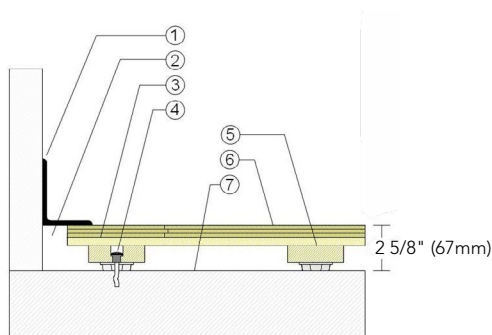
Anchored PowerLoc

Anchored PowerLoc is a hybrid of our ever popular ScissorLoc and Anchored PowerSleeper systems. The floor is a good selection for new and retrofit sports floor applications.



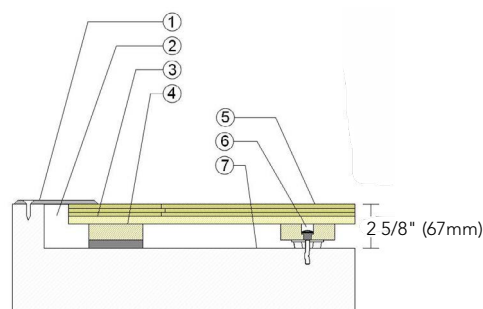
1. Infinity MFMA Maple
2. 1/2" x 5 1/2" Dimensional Pine (12mm x 140mm)
3. Pre-Engineered Plywood Sleeper
4. Steel Concrete Anchor with Bushing
5. 1/2" (12mm) TriPower™ pad
6. PowerVent Airflow Option
7. Vapor Retarder

WALL BASE



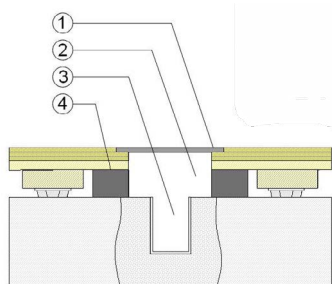
1. 3" x 4" (76mm x 101mm) Vent Cove Base
2. 1-1/2" (38mm) Min. Expansion Space
3. 1/2" x 5-1/2" (12mm x 140mm) Pine Subfloor
4. Steel Concrete Anchor and Bushing
5. Engineered Plywood Sleeper with 1/2" (12mm) TriPower Resilient Pad
6. 25/32" (20mm) MFMA Maple Flooring
7. Vapor Retarder

THRESHOLD



1. 1/4" (6mm) Aluminum Threshold
2. 1-1/2" (38mm) Min. Expansion Space
3. 1/2" x 5-1/2" (12mm x 140mm) Pine Subfloor
4. Engineered Plywood Sleeper with Solid Blocking Attached
5. 25/32" (20mm) MFMA Maple Flooring
6. Steel Concrete Anchor and Bushing
7. Vapor Retarder

EQUIPMENT



1. Floor Plate
2. 1 1/2" (38mm) Min. Expansion Space at all Inserts & Electrical Penetrations
3. Concrete Floor Penetration
4. Solid Blocking at Insert

Anchorage

Certified

Drill and Pin



Green Status and LEED Contributors



- FSC® Certified Maple - MR
- FSC® Certified Subfloor Components - MRc7
- Environmental Quality - EQ
- Regional Materials - MR

Resilience

1/2" (12mm) TriPower™ Pad
*Other pad options available.

Slab Depression

- 25/32" (20mm) flooring
-2 5/8" (67mm)

Optional PowerSleeper Systems

Anchored PowerLoc LP
Anchored PowerSleeper
Anchored PowerSleeper SE

Optional Protection System

PowerVent™ Airflow System

Subfloor Construction

Engineered sleepers and subfloor

System Type

Fixed Resilient

Testing Laboratory Partners



It is the policy of Infinity Wood Floors to continuously improve its line of products. Therefore, Infinity Wood Floors reserves the right to change, modify or discontinue systems, specifications and accessories of all products at any time without notice or obligation to purchaser.



see us at
Sweets.com

